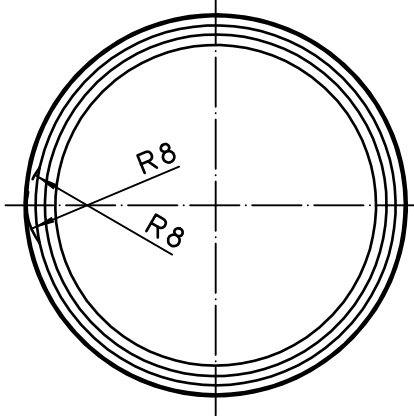
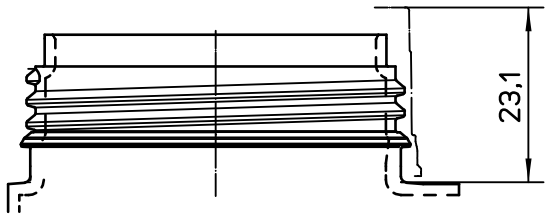


right hand thread
single thread
720° turns
pitch 3 mm



- gauge dimension

Excerpt from DIN 16901 series 150

Dimension	0-3	3-6	6-10	10-15	15-22	22-30	30-40	40-53	53-70
Tolerance	$\pm 0,15$	$\pm 0,17$	$\pm 0,2$	$\pm 0,24$	$\pm 0,28$	$\pm 0,33$	$\pm 0,39$	$\pm 0,47$	$\pm 0,58$



BERICAP GmbH & Co.
D-55257 BUDENHEIM/RHEIN
Kirchstraße 5

Prod.-Hierarchy No. H165	Sheet X
Proj. No.	X Sh.

Tel.: +49 (0) 6139/2902-0 Fax: +049 (0) 6139/2902-182

Weight:
Mat:
This drawing is the property of Bericap Germany. It is confidential and must not be copied or shown to third parties.

Tolerances unless otherwise stated:
DIN 16 901 150
Surface:
DIN ISO 1302 (Ra)

2005	Date	Name
Drawn	27.07.2005	Lohmann
Checked		
Approved	07.10.2005	Gehindy

Title:
Muendung / Lochung (H)
50/20 1/3,00 TE

Scale:
1:1
(1:1)

Category:
Finish-/Aperture drawing
Drawing No.: ENG-00-005021

Iss.	Change	Date	Name	DIN A4	Repl.for: H165d	Repl.by:
------	--------	------	------	--------	-----------------	----------